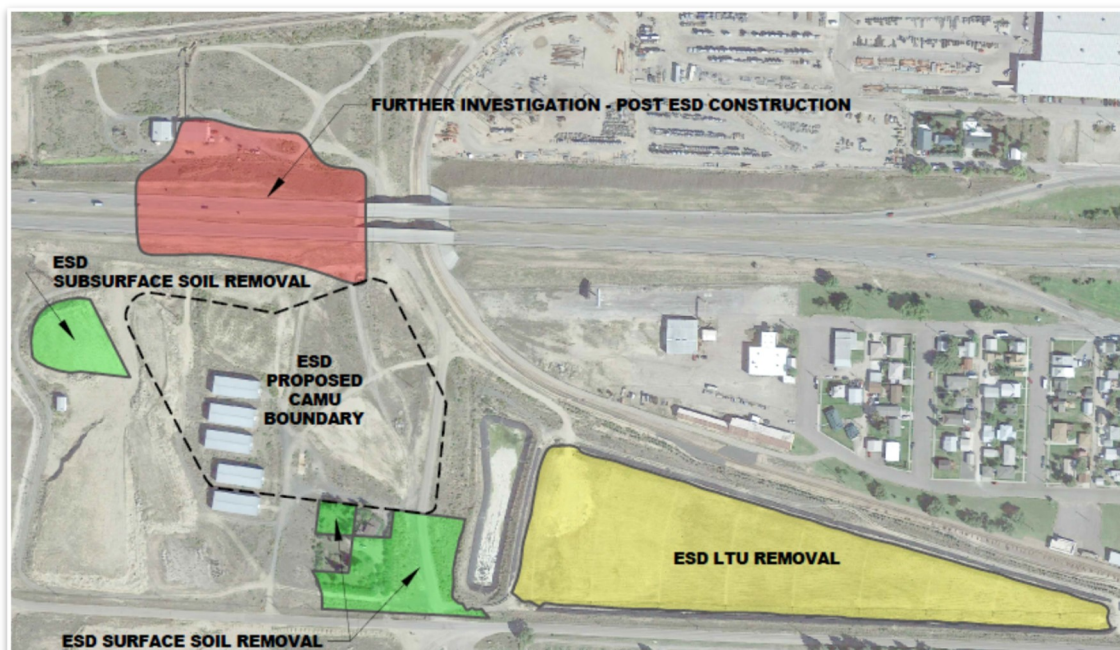


Montana Pole & Treating Plant



Site Update

APRIL 2022



SPRING CONSTRUCTION

Spring construction will start on the south side of the Montana Pole and Treating Plant site to place the treated soils from the Land Treatment Unit (LTU) in a 9-acre, onsite designated engineered repository area called a Corrective Action Management Unit (CAMU). The construction goal for the south side of the site is to make it safe for recreation and industrial use. The CAMU will remain in the state's control while the remaining 27 acres can be redeveloped.

Initial construction has included screening of clean soil stockpiles, sampling and additional construction activities with major removal of soils occurring this spring and summer.

A representative will be onsite daily at the park next to the Silverbow Fire Training Center from May 9-13 to answer any questions from the public and monitor for dust, vapors and odors. DEQ is using an instrument called a Nasal Ranger at the site to measure the degree of odors that are coming from the construction site. If the odors reach a certain threshold, DEQ's contractor is prepared to apply measures to reduce or eliminate the odors. Remember that odors do not equate to contamination. Based on soil analysis for polyaromatic hydrocarbons (PAHs) in the LTU, DEQ does not anticipate any vapor issues. Nevertheless, vapor monitoring is also being conducted to measure for airborne contaminants to protect the construction workers. The primary contaminants of concern are dioxin and pentachlorophenol, which are not found in vapors, but will be monitored through air monitoring for particulate matter (dust). DEQ and the EPA are holding a neighborhood open house on May 11 to answer any questions and provide additional information. If you have questions or concerns please contact Dave Bowers at (406) 438-1171.

OPEN HOUSE
May 11 at 6 p.m.
SILVERBOW FIRE TRAINING CENTER (350 Josette Ave, Butte, MT)

COMMUNITY OPEN HOUSE

Join DEQ and the EPA for a community open house to speak with experts on the Montana Pole & Treating Plant construction season.

May 11, 2022 at 6 p.m.

In-person: Silverbow Fire Training Center (350 Josette Ave, Butte)



SOIL SCREENING ACTIVITIES

Soil screening started in December and will continue through the spring. The screening helps to separate the rocks from the soil that will be utilized for fill material.

STAY UP TO DATE ON CONSTRUCTION ACTIVITIES

DEQ and the EPA have developed dashboards that provide updates on the construction process and site history. The dashboards will launch May 9, 2022. To view the dashboards please visit: deq.mt.gov/cleanupandrec/Programs/superfundfed and scroll down to the Montana Pole site overview tab.



INFORMATION

DEQ
Dave Bowers
Project Manager
406-444-6335
dbowers@mt.gov

DEQ
Moira Davin
Public Relations
Specialist
406-444-6360
moira.davin@mt.gov

EPA
Allie Archer
Remedial Project Manager
406-438-6255
archer.allie@epa.gov

EPA
Dana Barnicoat
Community Involvement
Coordinator
406-457-5007
barnicoat.dana@epa.gov